

Solutions for a safe, efficient and economic wastewater treatment process

Kleine offers holistic solutions for wastewater treatment systems. Our clients benefit from 40 years of experience in the market. Our roots and core competency are the biologic process automation and optimization. Today we support our clients in all phases of a wastewater treatment plant from the process conception of a new plant to the optimization of a running plant – comprehensively and individually.

The concept of protecting the environment by saving resources affects our daily work and drives us to find new innovative solutions that make wastewater treatment plants safer and more efficient.

Our solutions can automatize and optimize your wastewater treatment plant, i.e. you can make your own contribution to the common objective "clean water". This includes a stable process, safe discharge values, a high operational safety, little maintenance and an improved economic situation.

Clean water – We take care of it for you.



Kleine Solutions GmbH

Werftstrasse 5
 20457 Hamburg
 Germany
 Phone +49 (0)40 789 175 10
 Fax +49 (0)40 789 175 30
 mail@kleine.de
 www.kleine.de

Clean water – We take care of it for you.

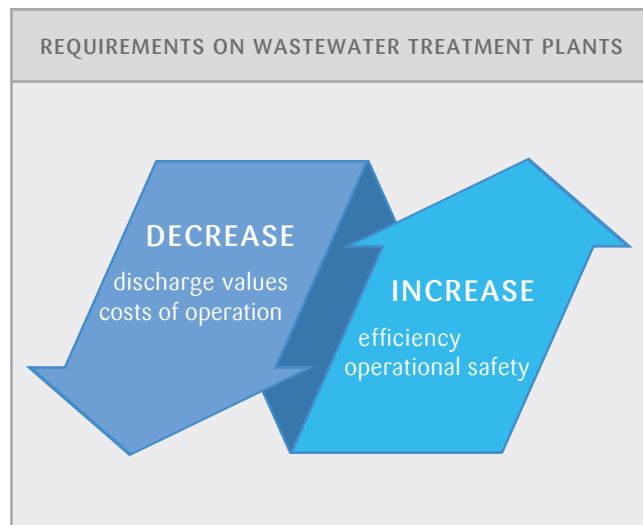
BioCon – Biology Control System for wastewater treatment plants

The intelligent tool for your
safe continuous operation

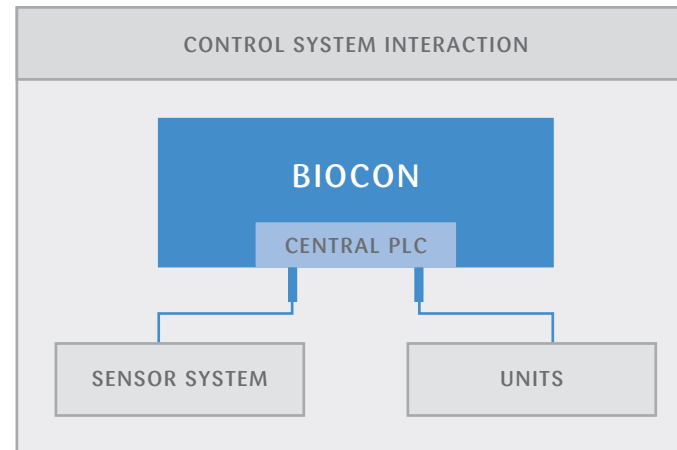


Reasons for a biology control system

Most wastewater treatment plants today juggle with a number of requirements that are hard to coordinate without major trade-offs: Next to the targeted discharge values that need to be kept and a continuous operational safety, costs and energy consumption should be low.



HOW BIOCON WORKS



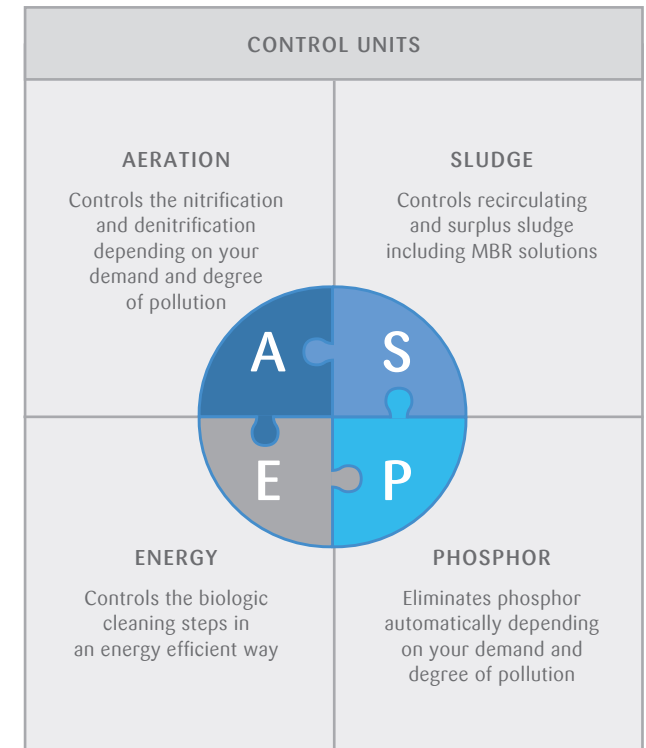
BioCon controls the entire process.

YOUR BENEFITS

To cover all these issues smoothly Kleine Solutions has developed BioCon, an intelligent tool that allows to realize the following objectives:

- ≈ Decrease operating costs
- ≈ Decrease energy consumption
- ≈ Decrease the discharge values
- ≈ Stabilise the cleaning performance
- ≈ Decrease the costs for flocculants
- ≈ Increase the biological decomposition of phosphor
- ≈ Reduce the amounts of sludge
- ≈ Increase the transparency of the whole process

WHAT BIOCON DOES



All BioCon components can be chosen separately as required. The components interlink and BioCon combines them into a holistic controls strategy.